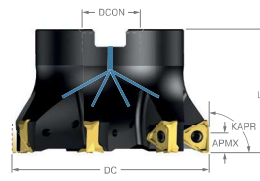
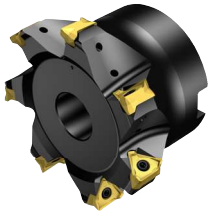





CoroMill® MS60 square shoulder milling cutter

KAPR




90°



Metric version

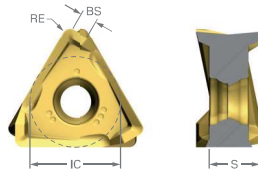
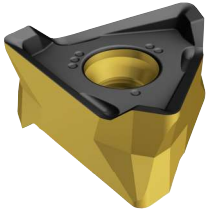
										Dimensions, mm					
DC	SSC	CZC _{MS}	APMX _{FFW}	RMPX	AZ	CNSC		Ordering code	DCON _{MS}	ISO	LF			RPMX	MIID
50.0	1605	22	8.00	1.60°	0.7	1	4	MS60-R050Q22-16M	22.0	A	40.0	2.0	0.26	10700	MS60-1605..
50.0	1605	22	8.00	1.60°	0.7	1	5	MS60-R050Q22-16H	22.0	A	40.0	2.0	0.25	10700	MS60-1605..
63.0	1605	22	8.00	1.30°	0.7	1	5	MS60-R063Q22-16M	22.0	A	40.0	2.0	0.45	9600	MS60-1605..
63.0	1605	22	8.00	1.30°	0.7	1	7	MS60-R063Q22-16H	22.0	A	40.0	2.0	0.42	9600	MS60-1605..
80.0	1605	27	8.00	1.00°	0.7	1	7	MS60-R080Q27-16M	27.0	A	50.0	2.0	0.94	8500	MS60-1605..
80.0	1605	27	8.00	1.00°	0.7	1	9	MS60-R080Q27-16H	27.0	A	50.0	2.0	0.94	8500	MS60-1605..
100.0	1605	32	8.00	0.75°	0.5	1	8	MS60-R100Q32-16M	32.0	A	50.0	2.0	1.63	7600	MS60-1605..
100.0	1605	32	8.00	0.75°	0.5	1	11	MS60-R100Q32-16H	32.0	A	50.0	2.0	1.62	7600	MS60-1605..

Inch version

										Dimensions, inch					
DC	SSC	CZC _{MS}	APMX _{FFW}	RMPX	AZ	CNSC		Ordering code	DCON _{MS}	ISO	LF			RPMX	MIID
2.000	1605	3/4	.315	1.80°	.028	1	4	MS60-AR051R19-16M	.750	A	1.500	1.4	0.64	10700	MS60-1605..
2.000	1605	3/4	.315	1.80°	.028	1	5	MS60-AR051R19-16H	.750	A	1.500	1.4	0.64	10700	MS60-1605..
2.500	1605	1	.315	1.40°	.028	1	5	MS60-AR063R25-16M	1.000	A	1.625	1.4	1.06	9600	MS60-1605..
3.000	1605	1	.315	1.10°	.028	1	7	MS60-AR076R25-16M	1.000	A	2.000	1.4	1.81	8500	MS60-1605..
3.000	1605	1	.315	1.10°	.028	1	9	MS60-AR076R25-16H	1.000	A	2.000	1.4	1.76	8500	MS60-1605..
4.000	1605	1 1/2	.315	.80°	.020	1	8	MS60-AR102R38-16M	1.500	A	2.500	1.4	5.47	7600	MS60-1605..
4.000	1605	1 1/2	.315	.80°	.020	1	11	MS60-AR102R38-16H	1.500	A	2.500	1.4	5.45	7600	MS60-1605..

CoroMill® MS60 insert for milling

KRINS 90°



	SSC	RE	Ordering code	P			M			K			S			Dimensions, mm, inch			
				1040	1130	4330	1040	1130	1020	3330	4330	1040	1130	IC	LE	S	BS		
Light L50	1605	0.80	MS60-160508M-L50	☆	★	☆	★	☆	★	☆	☆	☆	☆	☆	9.6	8.0	5.35	1.6	
		.031													.378	.315	.211	.063	
Medium M40	1605	0.80	MS60-160508M-M40		★	☆		☆	☆	★	☆		☆	9.6	8.0	5.35	1.6		
		.031													.378	.315	.211	.063	